

## TP2

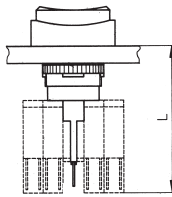
Panel cut-out (mm)	Ø16.2 or Ø22.5
Characteristics	<ul style="list-style-type: none"> <li>■ momentary or latching</li> <li>■ sealed IP40, IP65 or IP67</li> <li>■ wide range of bezels</li> <li>■ with or without illumination</li> <li>■ NO, NC, CO</li> <li>■ gold plated single or double pole contact blocks</li> </ul>
Rating	250 VAC, 5 A
Dimensions (mm)	18 × 24 18 × 18 Ø18 Ø25
Actuator	■ lenses in different shapes and colors
Approvals	UL, CSA, VDE



## Specifications

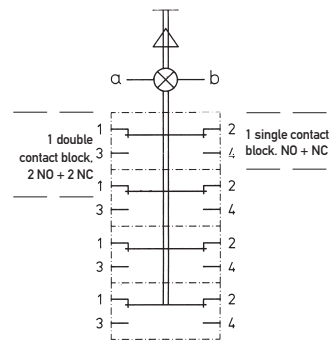
Mechanism	Bi-functional – momentary or latching
Actuating force	Approximately 2.5N – 1 contact block
Mounting	Central fixing with metal lock nut
Protection	IP40, IP65, IP67
Bezel material	Thermoplastic or anodized aluminum alloy
Lens material	Polycarbonate – engravable
Illumination	T1 ¾ midget grooved lamps – incandescent lamps, LEDs, multi LEDs 60 V, 1.2W maximum Lamp contact "b" = cathode (-) Appropriate safety regulations should be respected when using the indicator light.
Temperature range °C	-20°C to +85°C
Mechanical life	10 <sup>6</sup> cycles
Contact block	Slide-on assembly by the user with locking mechanism
Contact block housing	Self-extinguishing duroplastic (UL 94 plus V0)
Terminal material	Silver alloy with 0.2 µm silver plating, 0.4 µm gold plating
Contact resistance	<30 mOhm
Number of contact blocks	User configurable NO or NC types up to a maximum of 2 double contact blocks
Terminals	Solder – suitable for wire diameter 1 × 1.00 mm <sup>2</sup> (braided), 2 × 0.75 mm (stranded) Faston – 2.8 mm × 0.5 mm
Vibration resistance	1.5 mm pp amplitude at 55 Hz

### Dimensions

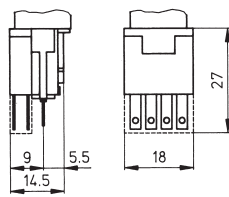


Length in mm (with contact block)	
plastic bezels	43.0
aluminum bezels	42.0
aluminum bezels	50.0
concealed mounting	

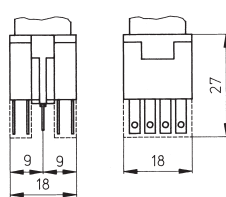
### Circuit diagram (2 double contact blocks)



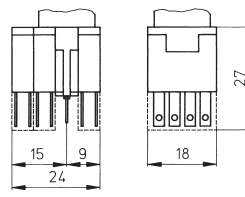
### Contact blocks 1 single contact block



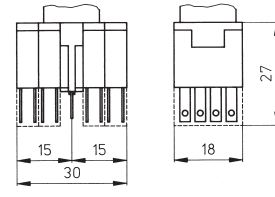
### 2 single contact blocks



### 1 single contact block + 1 double contact block



### 2 double contact blocks



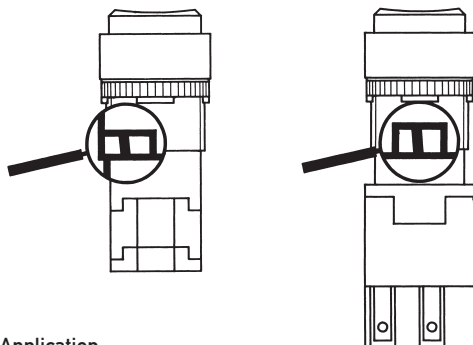
## Recommended maximum electrical ratings

Voltage (max) 250 VAC	Resistive load (A) 5.0 (0.7 pf)	Inductive load (A) L/R = 15 ms	Approval UL, CSA, VDE - max. admissible circuit breaker C6A
12 VDC	5.0	3.0	General rating
24 VDC	4.0	2.0	General rating
36 VDC	3.0	1.7	General rating
48 VDC	2.0	1.5	General rating
60 VDC	1.5	1.2	General rating
125 VDC	0.5	0.3	General rating
250 VDC	0.3	0.2	General rating
Electrical life	50,000 cycles at 5A, 250 VAC, 0.7 pf		

# TP2

## Bi-functional selection

All latching switches in the range incorporate a simple selector mechanism for modifying the function of the switch. This function is not available with momentary switches.

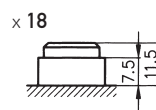
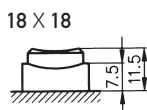
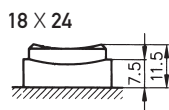


### Application:

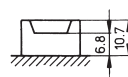
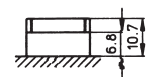
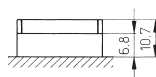
When the switch is in the off position the selector mechanism can be moved to the right to obtain a momentary function, or to the left to return to a latching function.

## Plastic bezel and lens heights in mm (switch off position)

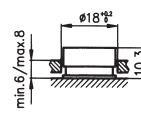
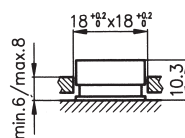
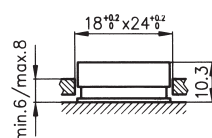
exposed version IP40



exposed version IP67



### Panel cut-out exposed version 16.2 ±0.1 mm

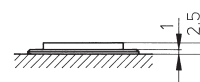


## Aluminum bezel Ø25 and lens heights in mm (switch off position)

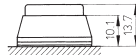
aluminum bezel  
without sealing gasket (IP40)



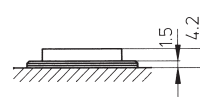
aluminum bezel  
countersunk mounting (IP40)



aluminum bezel  
with sealing gasket (IP65)



aluminum bezel  
countersunk mounting (IP67)



### Panel cut-out 22.5 ±0.1 mm

Front panel thickness

plastic bezel

1.0 mm to 6.5 mm

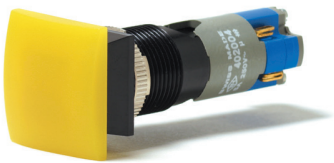
aluminum bezel 1.0 mm to 5.0 mm

countersunk mounting 2.0 mm to 15.0 mm

# TP4

## TP4

Panel cut-out (mm)	Ø16.2 or Ø22.5
Characteristics	<ul style="list-style-type: none"><li>■ mushroom</li><li>■ momentary or latching</li><li>■ sealed IP40 or IP65</li><li>■ wide range of bezels</li><li>■ NO, NC</li><li>■ gold plated contact blocks</li></ul>
Rating	250 VAC, 5 A
Dimensions (mm)	18 × 24 24 × 24 Ø24 Ø30
Actuator	■ mushroom cap in different shapes and colors
Approvals	UL, CSA, VDE



Assembled Pushbutton

## Specifications

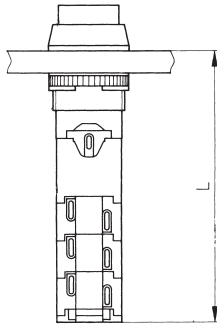
Mechanism	Momentary or latching
Actuating force	Approximately 2.5N – 1 contact block
Mounting	Central fixing with metal lock nut
Protection	IP40, IP65
Bezel material	Thermoplastic or anodized aluminum alloy
Lens material	Polycarbonate – engravable
Illumination	Non-illuminated
Temperature range °C	-20°C to +80°C
Mechanical life	10 <sup>6</sup> cycles
Contact block (blocks)	Supplied fitted
Contact block housing	Self-extinguishing duroplastic (UL 94 V0)
Terminal material	Silver alloy with 0.2 µm silver plating, plus 0.4 µm gold plating
Contact resistance	< 30mOhm
Number of contact blocks	1 NO + 1 NC per contact block, up to a maximum of 3 contact blocks per switch
Terminals	Patented flexible solder - suitable for wire diameter 2 × 1.00 mm <sup>2</sup> (braided), 4 × 0.75 mm (stranded)
Vibration resistance	1.5mm pp amplitude at 55 Hz

## Recommended maximum electrical ratings

Voltage (max) 250 VAC	Resistive load (A) 5.0 (0.7 pf)	Inductive load (A)	Approval UL, CSA, VDE - max. admissible circuit breaker C6A
12 VDC	5.0	3.0	General rating
24 VDC	4.0	2.0	General rating
36 VDC	3.0	1.7	General rating
48 VDC	2.0	1.5	General rating
60 VDC	1.5	1.2	General rating
125 VDC	0.5	0.3	General rating
250 VDC	0.3	0.2	General rating

Electrical life 70,000 cycles at 5A, 250 VAC, 0.7 pf

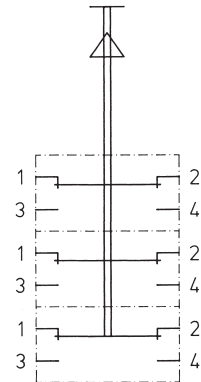
### Dimensions



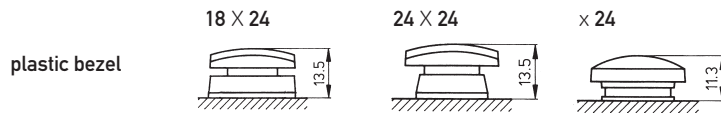
#### Length in mm

Panel cut-out	16.2 ± 0.1	22.5 ± 0.1
N° of contact blocks		
1	44.5	43.5
2	53.0	52.0
3	61.5	60.5

### Circuit diagrams (3 contact blocks)



### Bezel and lens heights in mm (switch off position)



panel cut-out 16.2 ± 0.1 mm



panel cut-out 22.5 mm

Front panel thickness 1.0 mm to 10 mm (Aluminum bezel 1.0 mm to 6.5 mm)

# TP5

## TP5

Panel cut-out (mm)  $\varnothing 16.2$  or  $\varnothing 22.5$

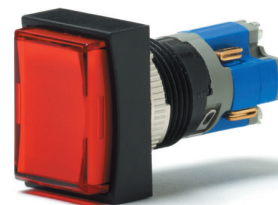
- Characteristics
- momentary or latching
  - sealed IP40 or IP65
  - wide range of bezels
  - shallow mounting depth
  - with or without illumination
  - NO, NC
  - gold plated contact blocks

Rating 250 VAC, 5 A

Dimensions (mm)  $18 \times 24$   
 $18 \times 18$   
 $\varnothing 18$   
 $\varnothing 25$

Actuator ■ lenses in different shapes and colors

Approvals UL, CSA, VDE

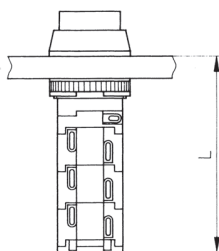


# TP5

## Specifications

Mechanism	Bi-functional – momentary or latching
Actuating force	Approximately 2.5N – 1 contact block
Mounting	Central fixing with metal lock nut
Protection	IP40, IP65
Bezel material	Thermoplastic or anodized aluminum alloy
Lens material	Polycarbonate – engravable
Illumination	T13/4 midget grooved lamps – incandescent lamps, LEDs, multi LEDs 60 V, 1.2 W maximum Lamp contact "a" = cathode (-) Appropriate safety regulations should be respected when using the indicator light.
Temperature range °C	-20°C to +80°C
Mechanical life	10 <sup>6</sup> cycles
Contact block (blocks)	Supplied fitted
Contact block housing	Self-extinguishing duroplastic (UL 94 V0)
Terminal material	Silver alloy with 0.2 µm silver plating plus 0.4 µm gold plating
Contact resistance	< 30mOhm
Number of contact blocks	1 NO + 1 NC per contact block, up to a maximum of 3 contact blocks per switch
Terminals	Patented flexible solder – suitable for wire diameter 2 × 1.00 mm <sup>2</sup> (braided), 4 × 0.75 mm (stranded)
Vibration resistance	1.5 mm pp amplitude at 55 Hz

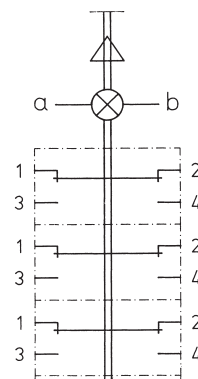
Dimensions



Length in mm (countersunk mounting version)

Panel cut-out		16.2 ±0.1	22.5 ±0.1
N° of contact blocks	1	27.5	26.5 (35.0)
	2	36.0	35.0 (43.5)
	3	44.5	43.5 (52.0)

Circuit diagram (3 contact blocks)



## Recommended maximum electrical ratings

Voltage (max)	Resistive load (A)	Inductive load (A)	Approval
250 VAC	5.0 (0.7 pf)		UL, CSA, VDE - max. admissible circuit breaker C6A
12 VDC	5.0	3.0	General rating
24 VDC	4.0	2.0	General rating
36 VDC	3.0	1.7	General rating
48 VDC	2.0	1.5	General rating
60 VDC	1.5	1.2	General rating
125 VDC	0.5	0.3	General rating
250 VDC	0.3	0.2	General rating
Electrical life	70,000 cycles at 5A, 250 VAC, 0.7 pf		