

Tough Seal

Tough Seal

- Characteristics
- Definitive Clip
 - Sealed against dust and water
 - Single pole
 - Changeover. NC, NO
 - Snap-in mounting
 - Visual On/ Off feature
 - Non Illumination
 - Temp -40°/+ 85°C

Rating 5V DC 1mA-10mA
30V DC 5A
250V AC 5A

Dimensions (mm) 34.80 x 34.75 x 19.90

Actuator Rockers in different shapes/colors

Approvals None



Preferred Range Switch

Ordering Reference	Illumination	Connector	Mounting	Rocker	Housing	Feature
V12-051-551	Without	Various 100mm wires	Snap in	Black	Black	Definitive Clip

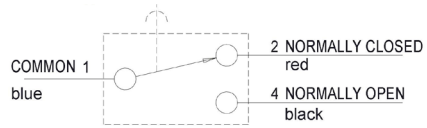
Specifications

- | | |
|----------------------|-----------------------------------|
| ■ Housing | PA |
| ■ Rocker | PA |
| ■ Mechanism | Single pole |
| ■ Functions | Changeover, NO, NC |
| ■ Contacts | Ag |
| ■ Protection | Against dust and water |
| ■ Mounting | Snap-in mounting, Definitive Clip |
| ■ Tracing Resistance | PTI 250 |
| ■ Glow wire | 850°C |
| ■ Contact gap | μ-disconnection |

Tough Seal

Circuit diagram

Diagram of connection

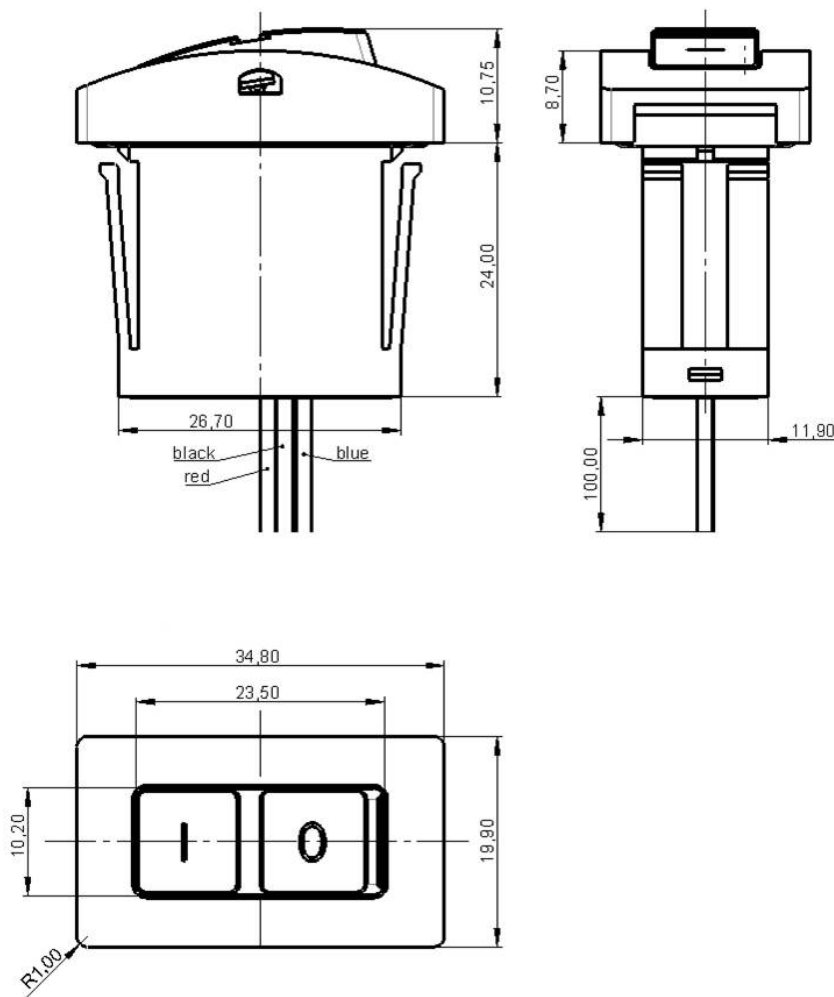


Mounting frame

Defined panel thickness: 2,00mm ± 0,10mm



Dimensions



Tough Seal Plus

Tough Seal Plus



- Characteristics
- Definitive Clip, Positive Seal
 - Sealed against dust and water
 - Single pole
 - Changeover, NC, NO
 - Snap-in mounting
 - Visual On/ Off feature
 - Illumination/ Non Illumination
 - Temp -40°/+ 85°C

Rating 5V DC 1mA-10mA
30V DC 5A
250V AC 5A

Dimensions (mm) 34.80 x 34.75 x 19.90

Actuator Rockers in different shapes/colors

Approvals None

Preferred Range Switch

Ordering Reference	Illumination	Connector	Mounting	Rocker/Frame	Housing	Feature
V12-051-501	Without	Various, 100mm wires	Snap in	Black/Black	Black	Definitive Clip, Positive Seal
V12-051-502	With	Various, 100mm wires	Snap in	Black/Black	Black	Definitive Clip, Positive Seal

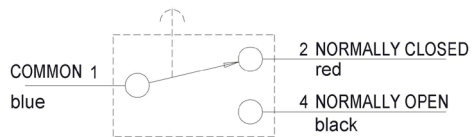
Specifications

- Housing PA
- Rocker PA
- Frame PA
- Mechanism Single pole
- Functions Changeover, NO, NC
- Contacts Ag
- Protection Against dust and water
- Mounting Snap-in mounting, Definitive Clip, Positive Seal
- Tracing Resistance PTI 250
- Glow wire 850°C
- Contact gap μ -disconnection

Tough Seal Plus

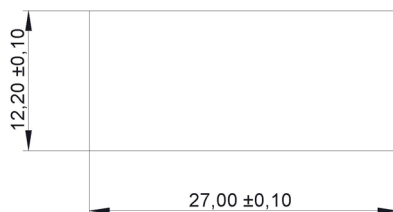
Circuit diagram

Diagram of connection



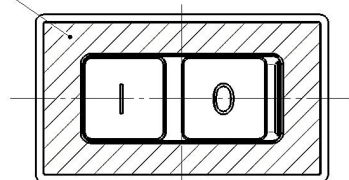
Mounting frame

Defined panel thickness: 2,00mm ± 0,10mm



Assembly Instruction

For fitting of the switch press in the hatched area with force F=(depends on application)



Dimensions

