

ACW-DINDIO

Digital Inputs/Output remote Equipment control

SMART BUILDING • ENERGETIC EFFICIENCY • INDOOR

Networks



Sigfox™



LoRaWan®

Performances



Range: Up to 15km

Autonomy



External power supply

Various



Configuration by USB



SMS & Emails alerts



Web platform



Classe 0



The ACW-DINDIO is a radio modem I/O with 2 digital inputs + 1 digital output “Dry contacts”. It allows to know the state of a Dry contact input and to control an output, for example the, the closing of a valve, when there is a water leak.

To compare with the current technologies, the ACW-DINDIO can be connected to LoRaWAN or Sigfox, which allows to have a long range, even in isolated places.



Technical features

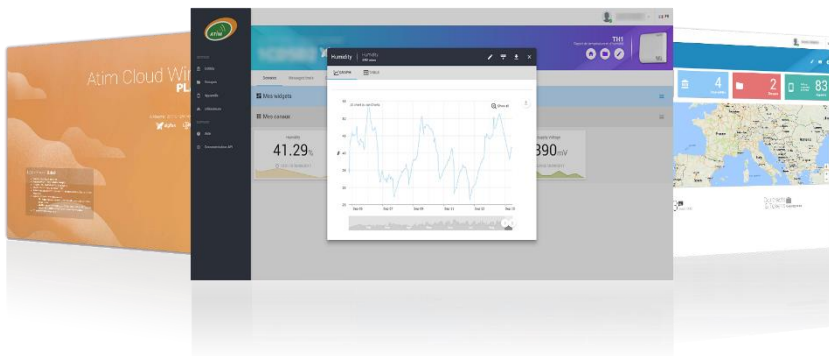
<i>Dimensions</i>	90 x 57 x 67 mm	
<i>Antenna</i>	External via SMA connector	
<i>Temperature</i>	-20°C to +55°C (operating mode) -40°C to +70°C (storage)	
<i>Mount</i>	DIN rail	
<i>Housing</i>	Compact DIN format	
<i>Power supply</i>	External 10-30Vcc	
<i>Weight</i>	100 g	
<i>Frequency</i>	865 – 870 MHz	
<i>Power</i>	25 mW (14 dBm)	
<i>Rate</i>	Sigfox: 100 bps LoRaWan: 300 bps to 10 Kbps	
<i>Consumption</i>	Sigfox	LoRaWan
<i>Tx mode</i>	25 mA	23 mA
<i>Sleep mode</i>	10 mA	10 mA
<i>Rx mode</i>	20 mA	16 mA

References

- ACW/LW8-DINDIO
LoRaWan
- ACW/SF8-DINDIO
Sigfox

Product available with or without ACW web platform.

Atim Cloud Wireless® Platform



Control all your ATIM devices using Sigfox and LoRa on one single secured Web platform. Access and manage your IoT data very easily!

Thanks to the new LPWAN networks, device remote management and telemetry become simple and accessible to anyone.

- 📁 Device management by group
- 👁️ Real-time data follow-up through user-friendly control panel
- 📶 First-class signal quality
- 🎮 Personalization of graphics and information channels
- 📧 SMS alerts
- 📥 Export your data (by product or by group)
- ✉️ Emails Alerts
- 📍 Geo-tracking of each product
- 🔒 Secured API



ATIM Radiocommunications

Chemin des Guillets
38250 Villard de Lans
France

www.atim.com
info@atim.com
+33 4 76 95 50 65

