

ACW TMxD-HP

Temperature radio modem

TEMPERATURE • ALERT • IP65 • IoT CLOUD • USB





Networks

-  Sigfox™
-  LoRaWan®
-  Compatible répéteur Sigfox
ACW-GW






Performances

-  Range: up to 15km

Autonomy

-  Eco-energy mode: 3 to 5 years of autonomy
-  Periodic mode: 2 years of autonomy with 1 Tx/h
-  2 batteries packs 14.4 Ah
-  Battery level indication

Divers

-  Configuration by USB
-  Configuration by downlink
-  SMS & Emails alerts
-  Web platform
-  Waterproof housing
IP65



The ACW-TMxD-HP will allow you to deport up two digital temperature probes provided and transmit data via radio to the cloud. The transmission of data is done at regular intervals and by alerts of exceeding thresholds. In case of anomaly, an email or SMS will be instantly sent to one or more recipients previously configured.

This temperature sensor is available in different versions for use on LPWAN networks dedicated to the Internet of Things: Sigfox and LoRaWAN. Ideal for supervising your equipment on the Web, it is perfectly adapted in urban environment and for use in buildings.



Technical features

Dimensions	177 x 55 x 55 mm	
Antenna	Integrated (¼ wave)	
Temperature	-20°C to +55°C (Operating mode) -40°C to +70°C (storage)	
Temperature supported by the probe	-55°C to +125°C	
Fixation	Mural, tube, DIN Rail	
Housing	IP 65	
Power supply	2 batteries pack 14.4Ah	
Weight	210g (avec une sonde) 280g (avec deux sondes)	
Frequency	865 – 870 MHz	
Puissance	25 mW (14 dBm)	
Data rate	Sigfox: 100 bps LoRaWAN: 300 bit/s à 10 Kbit/s	
Consumption	Sigfox	LoRaWAN
Tx Mode	60 mA	60 mA
Standby	6 µA	6 µA
Rx Mode	35 mA	25 mA

References

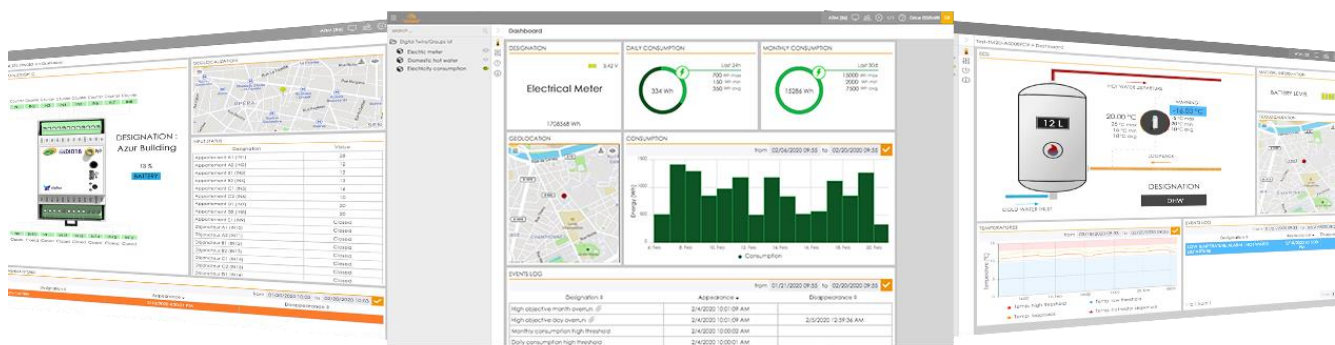
1 digital temperature probe:

- ACW/SF8-TM1D-HP
Sigfox version
- ACW/LW8-TM1D-HP
LoRaWAN version

2 digital temperature probes:

- ACW/SF8-TM2D-HP
Sigfox version
- ACW/LW8-TM2D-HP
LoRaWAN version

ATIM Cloud Wireless™ Platform (option)



Control all your ATIM devices using Sigfox and LoRa on the same secured Web platform!
Manage and operate your IoT data very easily.
Thanks to new LPWAN networks, device remote management is simple and accessible to anyone.

- Managing the products by groups
- Real time visualisation
- Signal quality
- Mobile app
- Emails & SMS alerts
- Secured API
- Export your data
- On-call management
- Products geolocation
- Personalization: white label
- Downlinks



ATIM Radiocommunications

Chemin des Guillets
38250 Villard de Lans
France

www.atim.com
info@atim.com
+33 4 76 95 50 65

