

# Analog input radio modem

ANALOG · ALERT · IP65 · IoT CLOUD · USB

## Network



Sigfox™



LoRaWan®



Local Modbus

## Performances



Range : up to 15km

## Autonomy



External power supply

## Divers



USB Configuration



SMS and Emails alerts



Web plateforme



Validation button



Waterproof IP65 box



The ACW-DA allows you to send one to **144 values** per day coming from an **analog input**. It is the perfect product to send the state of an **isolated sensor**, for example a **water level** or the filling up ratio of a tank. It is very low consumption because it manages the current loop power supply for the external sensor. This modem works on the new LPWAN networks dedicated to the IoT: Sigfox, LoRaWan or local Modbus radio.

It is the perfect product to maintain a good **supervision of your products** on the web, it makes the installation a lot easier where there isn't any power or communication.



## Technical features

<b>Dimensions</b>	160 x 53 x 53 mm
<b>Antenna</b>	Integrated (¼ wave)
<b>Temperature</b>	-20°C to +55°C (functioning mode) -40°C to +70°C (storage mode)
<b>Mounting</b>	wall, tube, DIN-Rail
<b>Box</b>	IP 65
<b>Power supply</b>	External 12-30V
<b>Weight</b>	100 g
<b>Frequency</b>	865 – 870 MHz
<b>Power</b>	25 mW (14 dBm)
<b>Speed</b>	Local : 1.2 to 115 Kbit/s Sigfox : 100 bps LoRaWan : 300 bit/s to 10 Kbit/s
<b>Consumption</b>	Local :      Sigfox :      LoRaWan :
<b>Tx mode</b>	60 mA      60 mA      50 mA
<b>Sleep mode</b>	<1mA      <1mA
<b>Rx mode</b>	35 mA      35 mA      18 mA
<b>SNIFF mode</b>	300 µA

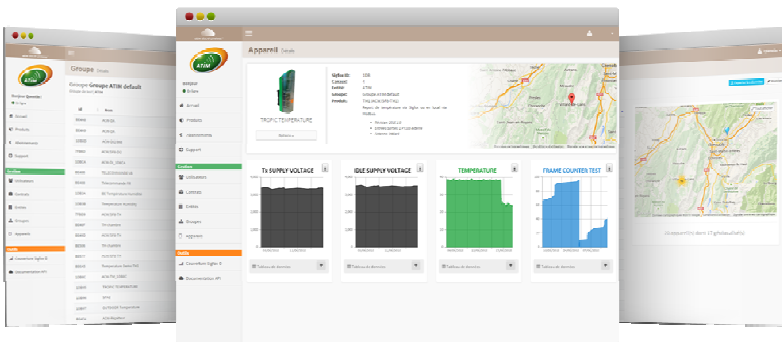
## References

### 1 analog input :

- ACW/SF8-DA  
*Sigfox and local*
- ACW/LR8-DA  
*LoRaWan and local*
- ACW/868-DA  
*Local only*

Available with the ACW platform or the modem on its own.

## Atim Cloud Wireless™ Platform



Control all your atim devices using Sigfox and LoRa on the same secured Web platform !

Manage and Operate your IoT sensors data very easily!

Thanks to the new LPWAN network device remote management is simple and accesible to anyone.

- Managing the products by groups
- Find all your data in real time on a graphic/control panel
- Signal quality
- Personalization of the graphics and information channels
- SMS Alerts
- Export your data (by product or by group)
- Email Alerts
- Geo-tracking of your products
- Secured API
- Radio coverage tool



**ATIM Radiocommunications**  
Chemin des Guillets  
38250 Villard de Lans  
France

www.atim.com  
info@atim.com  
+33 4 76 95 50 65

