



Codes	Descriptions
CREWPCEDITOR	PC DEVELOPMENT TOOL
CREWOPNFDA	FDA LICENCE CFR21


Codes	Descriptions
CRRT128OEM	PC RUNTIME OEM LICENCE 128 TAGS (ESA HARDWARE)
CRRT256OEM	PC RUNTIME OEM LICENCE 256 TAGS (ESA HARDWARE)
CRRT512OEM	PC RUNTIME OEM LICENCE 512 TAGS (ESA HARDWARE)
CRRT1024OEM	PC RUNTIME OEM LICENCE 1024 TAGS (ESA HARDWARE)
CRRT2048OEM	PC RUNTIME OEM LICENCE 2048 TAGS (ESA HARDWARE)
CRRT4096OEM	PC RUNTIME OEM LICENCE 4096 TAGS (ESA HARDWARE)
CRRT8192OEM	PC RUNTIME OEM LICENCE 8192 TAGS (ESA HARDWARE)
CRRTUNLOEM	PC RUNTIME OEM LICENCE UNLIMITED TAGS (ESA HARDWARE)
CRRT128OPN	PC RUNTIME OPEN LICENCE 128 TAGS (NOT ESA HARDWARE)
CRRT256OPN	PC RUNTIME OPEN LICENCE 256 TAGS (NOT ESA HARDWARE)
CRRT512OPN	PC RUNTIME OPEN LICENCE 512 TAGS (NOT ESA HARDWARE)
CRRT1024OPN	PC RUNTIME OPEN LICENCE 1024 TAGS (NOT ESA HARDWARE)
CRRT2048OPN	PC RUNTIME OPEN LICENCE 2048 TAGS (NOT ESA HARDWARE)
CRRT4096OPN	PC RUNTIME OPEN LICENCE 4096 TAGS (NOT ESA HARDWARE)
CRRT8192OPN	PC RUNTIME OPEN LICENCE 8196 TAGS (NOT ESA HARDWARE)
CRRTUNLOPN	PC RUNTIME OPEN LICENCE UNLIMITED TAGS (NOT ESA HARDWARE)

Codes	Descriptions
EVERYWAREAOA0NN	EVERYWARE LICENCE Single Domain / Single Access
EVERYWAREAOB0NN	EVERYWARE LICENCE Single Domain / Multi Access
EVERYWAREAOCONN	EVERYWARE LICENCE Multi Domain / Multi Access
EVERYWAREBONOAN	EVERYWARE OEM RUNTIME LICENCE PC (ESA HARDWARE)
EVERYWAREBONOBN	EVERYWARE OPEN RUNTIME LICENCE PC (NOT ESA HARDWARE)
EVERYWARECONONA	EVERYWARE LINUX SERVER LICENCE




Connect ideas. Shape solutions.  
www.esa-automation.com  
info@esa-automation.com

 **ESA elettronica S.p.A.**  
via Padre Masciadri 4/a  
22066 Mariano Comense (CO) -Italia  
Tel. +39 031 757400  
Fax +39 031 751777

 **ESA energy S.r.l.**  
Via Fortunato Zeni 8  
38068 Rovereto (TN) - Italia  
Tel. +39 0464 443272  
Fax +39 0464 443273

 **ESA Elettronica GmbH**  
Carl-Zeiss-Strasse, 35  
63322 Rödermark - Deutschland  
Tel. +49 6074 486 45 0  
Fax +49 6074 486 45 66

 **ESA Europa S.L.U.**  
Passeig del Ferrocarril, 335  
08860 Castelldefels (Barcelona) - España  
Tel. +34 936455014  
Fax +34 936455013

 **ESA Software & Automation India Pvt. Ltd**  
B.R. House, 3RD Floor Hennur Main Road,  
Bangalore 560 043 - India  
Tel. +91 80 25435656  
Fax +91 80 25435658

 **意萨电子科技（上海）有限公司**  
中国上海市宜山路889号齐来工业城4号楼6层D1  
**ESA Electronic Technology (Shanghai) Co. Ltd**  
Unit D1, 6F, Bldg. 4#, No. 889 Yishan Road  
Shanghai 200233 - P.R.China  
Tel. +86 21 6090 7250  
Fax +86 21 6090 7258

 **ESA Elektronik Technology Ticaret Limited Şirketi**  
Şerifali Mah., Çetin Cad. Kible Sk.  
No: 6 Of Plaza Kat: 5 D.: 7  
Ümraniye/İstanbul - Türkiye  
Tel.: +90 216 466 70 33  
Fax: +90 216 466 70 99

 **ESA Technology, Inc.**  
320 Tesconi Circle, Suite J  
Santa Rosa CA 95401 - U.S.A.  
Tel. +1 707 5447300  
Fax +1 707 5447360



Crew  
Our Platform. Your touch.

405.1500.031.2



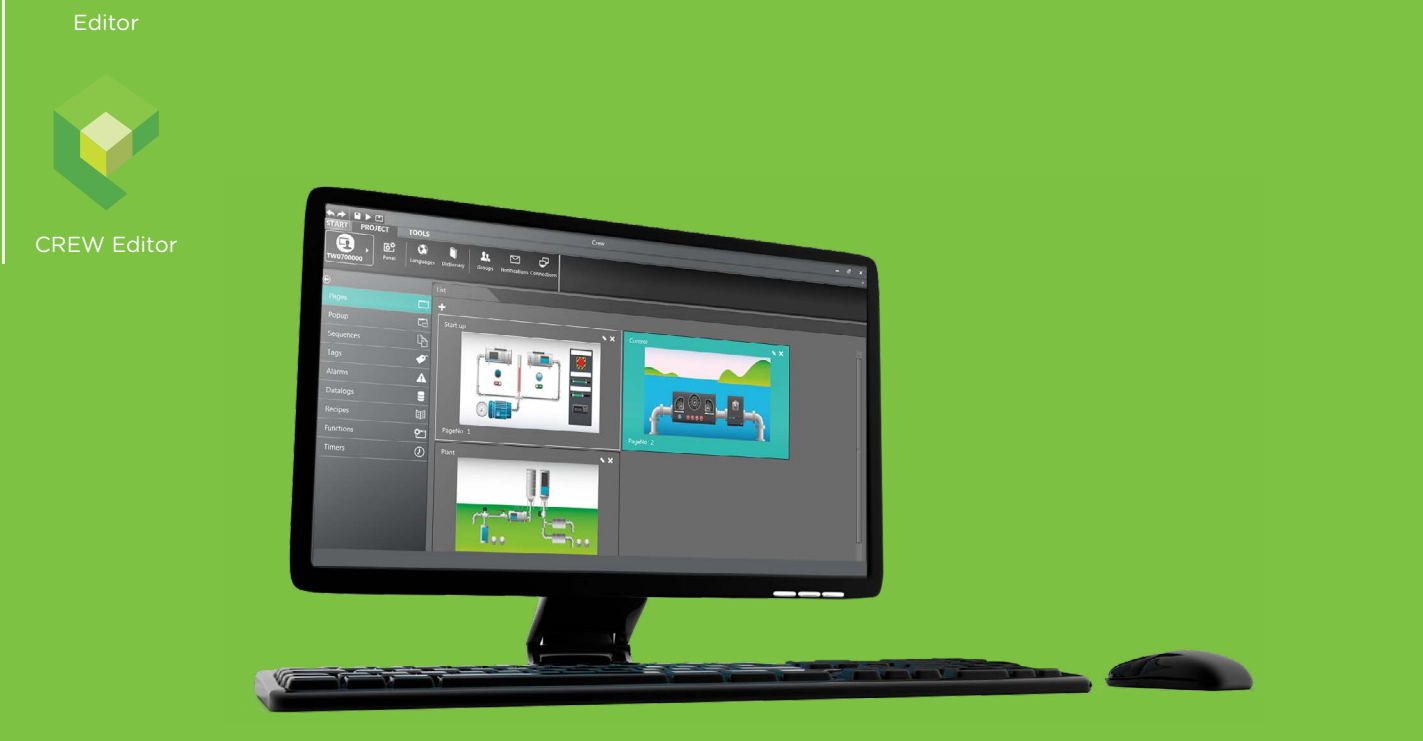
Esaware is the new solution created by ESA Automation: unique hardwares and creative softwares designed for easing your work experience: HMIs, I/Os, Panel PCs, Box PCs, SoftPlc, Monitors, Routers and Smart Meterings.  
Crew SCADA suite: Editor, Runtime PC, Apps and Everywhere Remote Maintenance Platform.



Crew Suite is the new SCADA by ESA Automation that allows you to easily program all Esaware platforms. Thanks to its user friendly and intuitive interface, it guarantees efficiency, ease of learning, ease of usage and full customer satisfaction. The perfect synergy between Crew and CoDeSys development environment allows you to program the application in a simple and intuitive way.

www.esaware.com

www.esaware.com



Crew's powerful tabular editor allows you to manage a big quantities of data with great speed. Producing, developing and managing objects now is easy: the new Crew Suite does it all for you. A brand new set of icons and templates gives you the fastest interactivity ever with amazing design. You can quickly create easy-to-use applications with an outstanding look. Crew offers a wide range of vectorial library objects freely customizable, with the possibility of having transparencies and gradients.



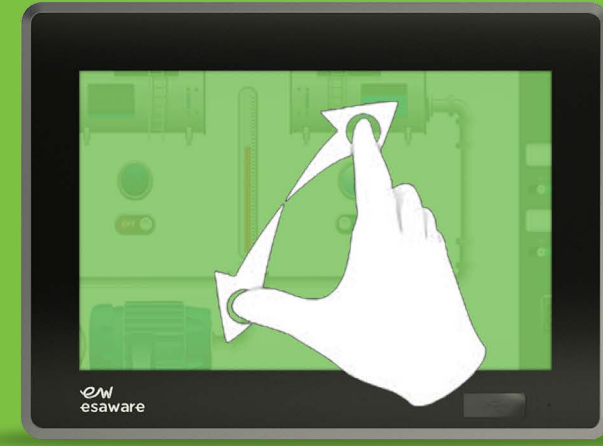
Crew's versatility enables you to gain remarkable time-saving. Thanks to Crew, programming your application has never been easier, smart and looking amazing.

Crew is based on language WPF and .net. The supported Operating Systems are:  
Windows XP Pro Service Pak 3  
Windows 7 all versions (32/64 bit)  
Windows 8.1 all versions (32/64 bit)

RunTime



CREW Runtime



Crew is particularly responsive to your gestures. Crew runtime works optimally with multi-touch applications. It quickly adapts and responds to ordinary commands. Details of the project can be navigated and edited with common gestures such as "Pinch", "Scroll" and "Swipe" functions, allowing you to quickly zoom in and interact with your project commands. Crew offers an advanced users management like graphical password system and powerful tools for archiving any type of data.

Crew has also a Runtime Pc software to run your application on any hardware based on X86 processor. Crew Runtime Pc is based on WPF technology, that allows the customer to use direct XAML file for 3D powerful animation.

The supported Operating Systems are:  
Windows XP all versions  
Windows 7 all versions (32/64 bit)  
Windows 8.1 all versions (32/64 bit)

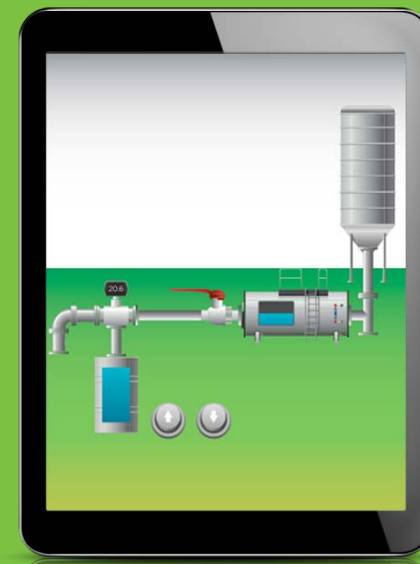


Crew also means safety. The Runtime respects FDA directives, especially the CFR21-part 11 about Food and Drugs. Users can in fact trace, record and authorize any Runtime activity for example through electronic signature.

Applications



CREW App



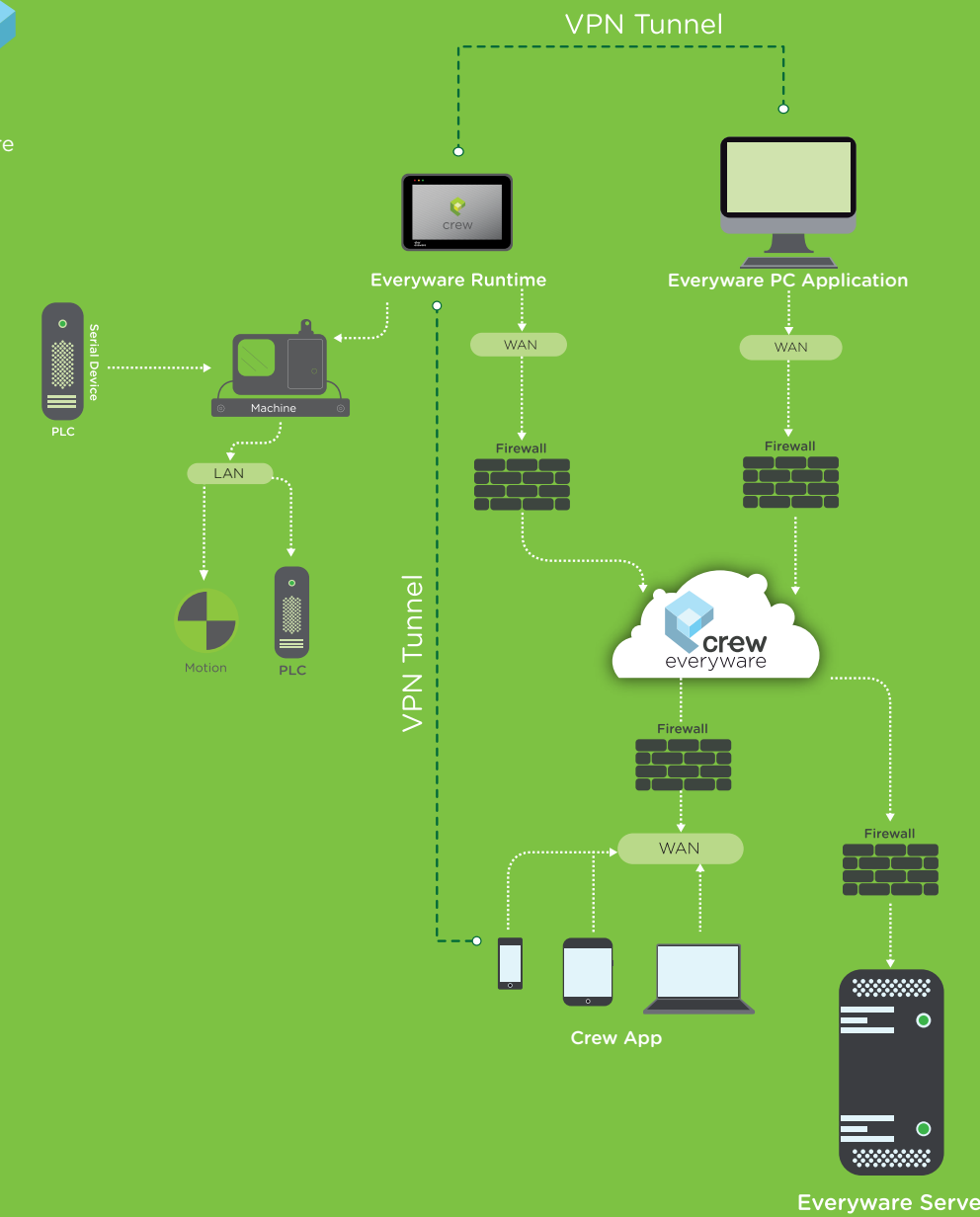
Crew is also App: now you can connect easily to your applications from any mobile device, such as smartphones or tablets with Android, Apple IOS or Windows Phone operating systems. Crew apps have been designed to control your plants from your mobile device with one-hand-free logic. The read only or editing mode makes the usage of any smartphone or tablet much easier.



Remote



Everyware



Thanks to the Everyware maintenance platform, you can safely eliminate any distance between you and your applications. Using a normal internet connection Everyware does not interfere with firewalls and does not require a public IP to connect, it manage common private IPs and let you freely work on your applications, single or multiple, wherever they are. Everyware drastically cuts down both time maintenance and travel expenses. Login to your Everyware Domain and be free to control, interact or modify the plants you have created as if they are just in front of you.

Everyware the fastest assistance ever: connection is automatically managed by the geolocalization system to grant the maximum data traffic speed available and its reliability is granted by a redundant server system that ensures the continuity of the service. Everyware starts an encrypted VPN connection with the selected plant. Data protection and connection security are guaranteed by a TLS 1.2 algorithm connection, that enables to check the identity according to a client-server logic.

Sharing, modify and create data has never been more simple:

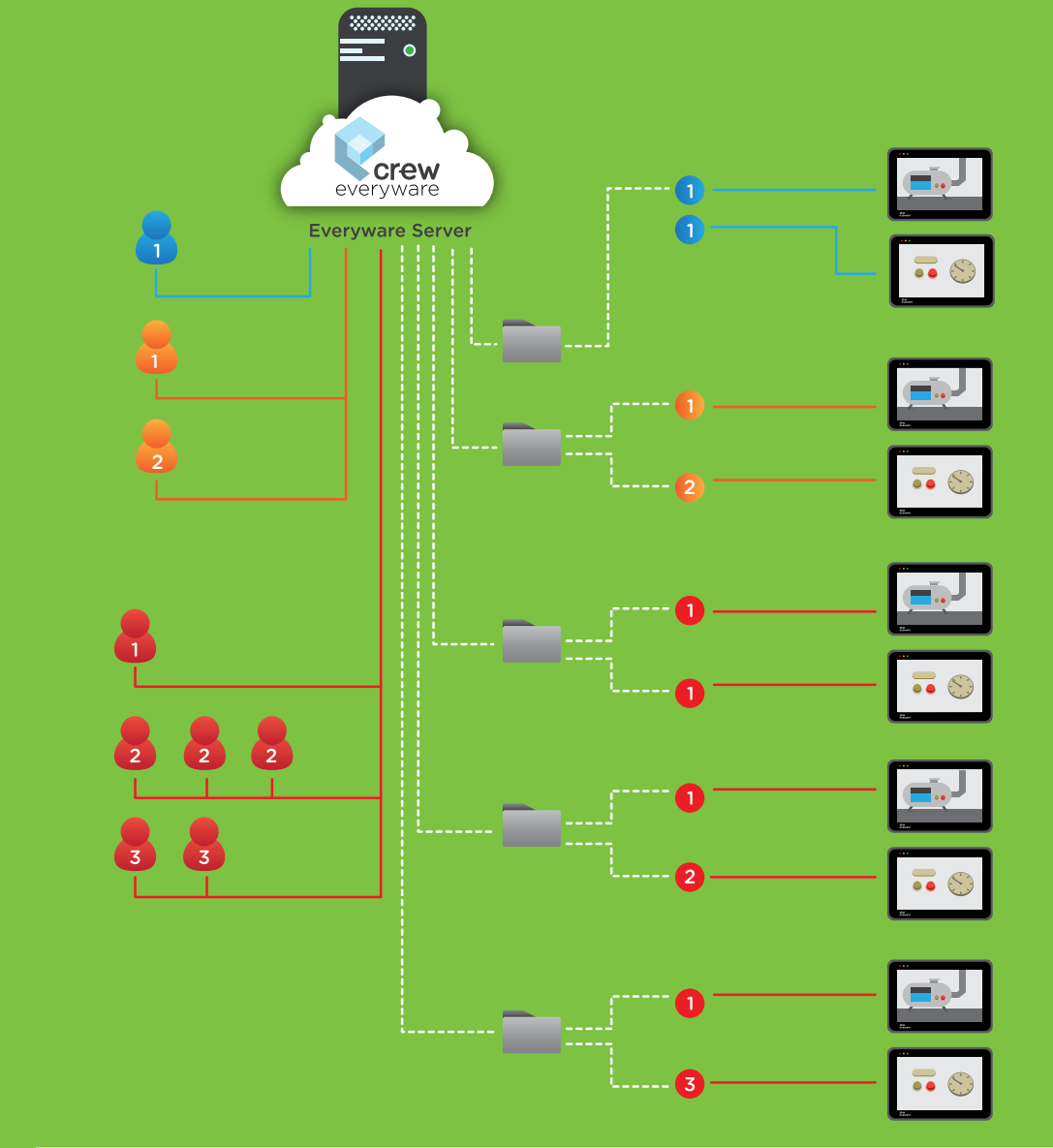
- Synchronous remote control
- Asynchronous remote control
- Remote programming and debugging of the HMI application
- Remote programming and debugging of devices such as PLC and drives
- Preventive maintenance through malfunction analysis
- File transfer
- Chat Service
- Remote management of system processes

Everyware works easily. Create your profile and you will have your account with your own domain, in where you can see your available devices. You can also decide to have single or multiple accesses to your domain for your users, in order to visualize and manage your data simultaneously or one by one, and of course users can also do all this while being located in different places in the world.

Everyware licenses are three:  
Single access - Single domain. One user per time can connect to the domain, where he can see and manage one application at a time. The Applications are as many as you have created.

Multi access - Single domain. More users have access to the domain, and they can work simultaneously. They can see several devices and manage one or more applications at a time.

Multi access - Multi Domain. Full freedom to organize your application as you wish. On Everyware you can create different domains and fill them with as many devices as you need. Furthermore, you can manage more users access that can connect to multiple domains, simultaneously and managing several applications. Having an Everyware domain also means that two or more branches of the same company can now work simultaneously on the same multiple project.



Single access Single domain   Multi access Single domain   Multi access Multi domain   Domain