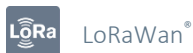


ACW-TI-G

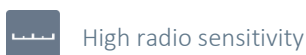
Temperature + GPS sensor

MONITORING INDUSTRIAL EQUIPMENT - ASSET TRACKING

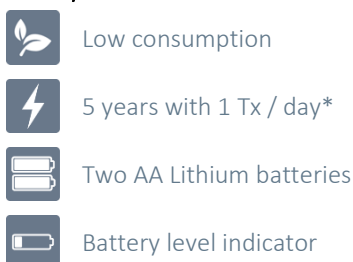
Network



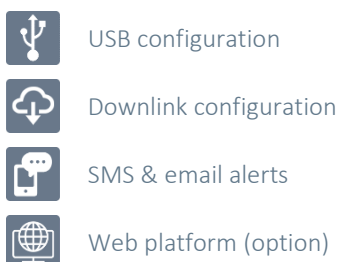
Performances



Autonomy



Other



The ACW-TI-G is a compact device measuring **the temperature of fixed or mobile equipment** and geo-locate precisely. The data is transmitted periodically in normal operation (for example 1 time / day). The GPS only wakes up if the equipment has moved since the last transmission, which guarantees autonomy for several years.

In the event of an alert exceeding the threshold, an email or SMS is instantly sent to one or more previously configured recipients (platform side).

This **GPS temperature** sensor exists in different versions intended to work on **LPWAN** networks dedicated to the Internet of Things such as Sigfox and LoRaWAN. Designed for online monitoring, **configurable remotely**, it is ideally suited for monitoring moveable mobile electrical cabinets, or any equipment to be monitored. The primary purpose of this Industrial Internet of Things (IIoT) product is to prevent abnormal heating of equipment and to locate it when needed.

** The autonomy depends on the number of alarms of the GPS, estimation 5 years without movement*



ATIM Radiocommunications
Chemin des Guillets
38250 Villard de Lans
France

www.atim.com
info@atim.com
+33 4 76 95 50 65



Technical features

Dimensions	80 x 80 x 35 mm
Antenna	Integrated (¼ wave) Integrated Ant. GPS/GNSS/GALILEO
Temperature	-20°C à +55°C (operation) -40°C à +70°C (storage)
Precision	+/-0.5°C
Housing	IP20
Power supply	2x AA lithium batteries
Weight	100 g
Frequency	865 – 870 MHz
Power	25 mW (14 dBm)
GPS sensitivity	-148dBm (Cold start) -163dBm (Hot start)
Consumption	LoRaWAN
Tx mode	50 mA
Standby	7 µA
Rx mode	18 mA
Coldstart GPS	32 mA

References

Temperature + GPS sensor

IP20 Indoor version

- ACW/LW8-TI-G
LoRaWAN

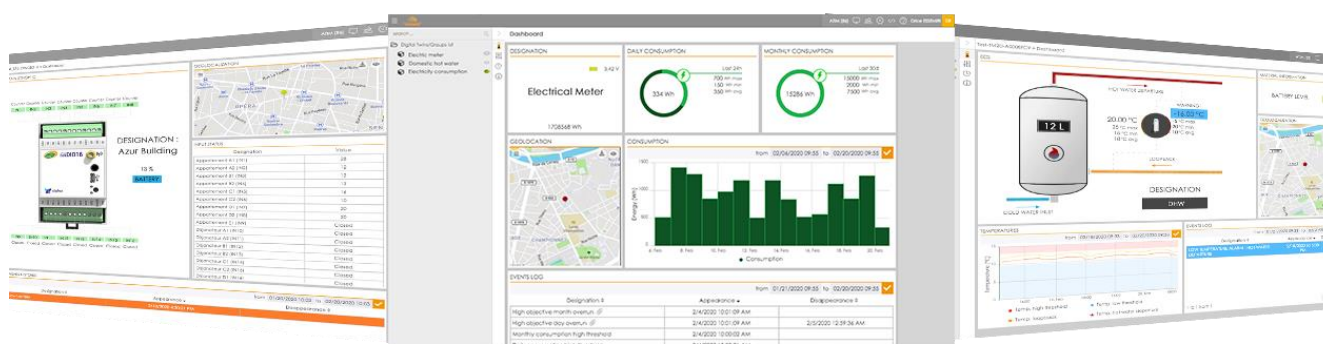


IP66 Outdoor version

- ACW/LW8-TO-G
LoRaWAN



ATIM Cloud Wireless™ Platform (option)



Control all your ATIM devices using Sigfox and LoRa on the same secured Web platform!

Manage and operate your IoT data very easily.

Thanks to new LPWAN networks, device remote management is simple and accessible to anyone.

- Managing the products by groups
- Real time visualisation
- Signal quality
- Mobile app
- Emails & SMS alerts
- Secured API
- Export your data
- On-call management

- Products geolocation
- Personalization: white label
- Downlinks



ATIM Radiocommunications

Chemin des Guilletes
38250 Villard de Lans
France

www.atim.com
info@atim.com
+33 4 76 95 50 65

