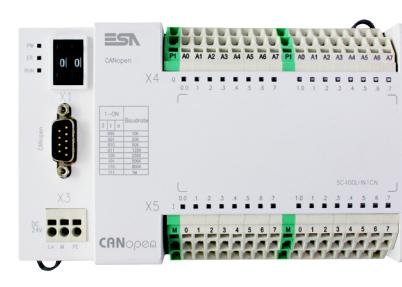


SC400PLC



SC400 Remote I/O



Connect ideas. Shape solutions.

www.esa-automation.com
info@esa-automation.com



SC Series

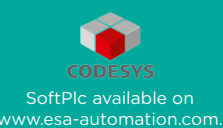
Programming Software **SmartClick** FreeDownload



SC400 PLC

	SC400CPU1CN	SC400CPU2CN	SC400CPU3CN
• Processor		X86	
• RAM		256 MB	
• Flash		512 MB	
• SoftPlc		CoDeSys v. 2.3	
• Serial Ports		1 x RS232/485 + 1 x CAN	
• Network		2 x 10/100Mb + 1 x 1Gb	
• USB Ports		2 x Usb Host 2.0	
• External Dimension (W/D/H) (mm)		162x90x60	
• Power Supply (Vdc)		18-32	
• Temperature (°C)		0 - 65	
• Weight (kg)		0.6	

Codes	Descriptions
SC400CPU1CN	CPU with 16DI/8DO/8AI/2AO/2HSIO
SC400CPU2CN	CPU with 24DI/24DO
SC400CPU3CN	CPU with 16DI/16DO/8AI/4AO/2HSIO



SC400 Remote I/O

	SC400LHN1CN	SC400LHN2CN
• Supply Voltage (Vdc)		24
• Input Number and Type	16 Digital	8 Digital + 6 Analog
• Output Number and Type	16 Digital (Relay 2 A)	8 Digital (Relay 2 A) + 2 Analog
• Temperature (°C)		0 - 65
• External Dimension (W/D/H) (mm)		156 x 115 x 52
• Weight (kg)		0.2

Codes	Descriptions
SC400LHN1CN	Remote I/O (16DI/16DO)
SC400LHN2CN	Remote I/O (8DI/6AI/8DO/2AO)



ESA elettronica S.p.A.
via Padre Masciadri 4/a
22066 Mariano Comense (CO) -Italia
Tel. +39 031 757400
Fax +39 031 751777



ESA energy S.r.l.
Via Fortunato Zeni 8
38068 Rovereto (TN) - Italia
Tel. +39 0464 443272
Fax +39 0464 443273



ESA Elettronica GmbH
Carl-Zeiss-Strasse, 35
63322 Rödermark - Deutschland
Tel. +49 6074 486 45 0
Fax +49 6074 486 45 66



ESA Europa S.L.U.
Passeig del Ferrocarril, 335
08860 Castelldefels (Barcelona) - España
Tel. +34 936455014
Fax +34 936455013



ESA Software & Automation India Pvt. Ltd
B.R. House, 3RD Floor Hennur Main Road,
Bangalore 560 043 - India
Tel. +91 80 25435656
Fax +91 80 25435658



意萨电子科技(上海)有限公司
中国上海市宜山路889号齐来工业城4号楼6层D1
ESA Electronic Technology (Shanghai) Co. Ltd
Unit D1, 6F, Bldg. 4#, No. 889 Yishan Road
Shanghai 200233 - P.R.China
Tel. +86 21 6090 7250
Fax +86 21 6090 7258



ESAElektronik Technology Ticaret Limited Şirketi
Şerifali Mah., Çetin Cad. Kible Sk.
No: 6 Of Plaza Kat: 5 D: 7
Ümraniye/İstanbul - Türkiye
Tel.: +90 216 466 70 33
Fax: +90 216 466 70 99



ESA Technology, Inc.
320 Tesconi Circle, Suite J
Santa Rosa CA 95401 - U.S.A.
Tel. +1 707 5447300
Fax +1 707 5447360



HMI & PLC

Put more control in your hands

4051500.026.2

	SC103	SC107- SC207	SC110 - SC210
• Size	3,5" Wide TFT 65k Colors White LED	7" Wide TFT 65k Colors White LED	10,1" Wide TFT 65k Colors White LED
• Resolution (pixel)	480 x 272	800 x 480	1024 x 600
• Flash		64 MB	
• Serial Ports	Port 1 RS232/RS485/COM0	SC107 Port 1-2 RS232/RS485/COM0 SC207 Port 1 RS232/RS485/MPI	SC110 Port 1-2 RS232/RS485/COM0 SC210 Port 1 RS232/RS485/MPI Port 2 RS232/RS485/COM0
• Network		1 x Ethernet 10/100 Mbit + RJ45	
• USB Ports	1 x v 1.1 Host	1 x v 1.1 Host + 1 x 1.1 Device	
• Slot		1 x Secure Digital/MMC	
• External (W/D/H)(mm)	113 x 74 x 50	SC107 198,8 x 137,8 x 47,5 SC207 202 x 142 x 40	280 x 190 x 44
• Cut-out (W/D/H)(mm)	105 x 66	SC107 190,2 x 129,2 SC207 194 x 134	271 x 181
• Power Supply		18...32 Vdc	
• Power Consumption	- 3 W (24 Vdc)	- 5 W (24 Vdc)	- 8 W (24 Vdc)
• Temperature (C°)		0 ... +50	
• Humidity		10...90% (non condensing)	
• Weight (kg)	- 0,3	- 0,8	- 1,4

Codes	Descriptions
SC103A0101	3,5" 65K COLORS ABS, PORT1/ETH
SC107A0111	7" 65K COLORS, ABS, PORT1/PORT2/ETH/SD SLOT
SC207A0101	7" 65K COLORS, ABS, PORT1/ETH/SD SLOT
SC110A0111	10,1" 65K COLORS, ABS, PORT1/PORT2/ETH/SD SLOT
SC210A0112	10,1" 65K COLORS, ABS, PORT1/PORT2/ETH/SD SLOT



IT Series

Programming Software FreeDownload



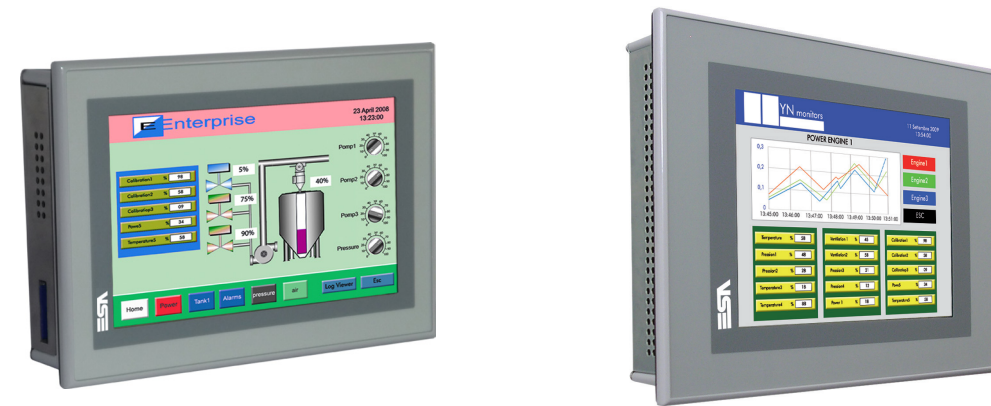
	IT104G	IT104T	IT105T
• Size	4,3" TFT 32 tones of gray White LED	4,3" TFT 65k Colors White LED	5,7" TFT 65k Colors White LED
• Resolution (pixel)	480x272		320x240
• Flash		32 MB	
• Serial Ports	SP1 RS232/485/MPI ; SP2 RS232/485/MPI, CAN, Profibus-DP, ProfiNet	SP1 RS232/485/MPI COM0; SP2 RS232/485/MPI, CAN, Profibus-DP, ProfiNet	SP1 RS232/485/MPI COM0; SP2 RS232/485/MPI, CAN, Profibus-DP, ProfiNet
• Network	Ethernet 10/100 Mbit - RJ45		
• USB Ports	1 x v 1.1 Host		1 x v 1.1 Host + 1 x v 1.1 Device
• Slot	-	-	Secure Digital / MMC
• Audio	-	-	-
• External (W/D/H)(mm)	166 x 112 x 31 (50 with double port)		210,9 x 158,6 x 42,8 (61 with double port)
• Cut-out (W/D/H)(mm)	157 x 103		194 x 142
• Power Supply		18...32 Vdc	
• Power Consumption	- 7 W (24 Vdc)		- 10 W (24 Vdc)
• Temperature (C°)		0 ... +50	
• Humidity		<90% (non condensing)	
• Weight (kg)	- 0,6		- 1,1

Codes	Descriptions
IT104G0101	4,3" Wide 32 GREY TONES TFT/SP1/ETH
IT104G0111	4,3" Wide 32 GREY TONES TFT/SP1/SP2/ETH
IT104G0121	4,3" Wide 32 GREY TONES TFT/SP1/CAN/ETH
IT104G0131	4,3" Wide 32 GREY TONES TFT/SP1/DP/ETH
IT104G0151	4,3" Wide 32 GREY TONES TFT/SP1/PROFINET/ETH
IT104T0101	4,3" Wide 65k Colors TFT/SP1/ETH
IT104T0111	4,3" Wide 65k Colors TFT/SP1/SP2/ETH
IT104T0121	4,3" Wide 65k Colors TFT/SP1/CAN/ETH
IT104T0131	4,3" Wide 65k Colors TFT/SP1/DP/ETH
IT104T0151	4,3" Wide 65k Colors TFT/SP1/PROFINET/ETH
IT104T0511	4,3" Wide 65k Colors TFT/COM0/SP2/ETH

Vibration EN60068-2-6 Shock EN60068 Humidity EN60068-2-30



Programming Software FreeDownload



	IT107W	IT107T
• Size	7" Wide TFT 65k Colors White LED	7,5" TFT 65k Colors White LED
• Resolution (pixel)	800x480	640x480
• Flash		32 MB
• Serial Ports	SP1 RS232/485/MPI SP2 RS232/485/MPI, CAN, Profibus-DP	SP1 RS232/485/MPI COM0 SP2 RS232/485/MPI, CAN, Profibus-DP, ProfiNet
• Network	Ethernet 10/100 Mbit - RJ45	
• USB Ports	1 x v 1.1 Host + 1 x v 1.1 Device	
• Slot	Secure Digital / MMC	
• Audio	-	
• External (W/D/H)(mm)	202 x 142 x 39,2 (58,2 with double port)	245,9 x 188,6 x 37,6 (56,6 with double port)
• Cut-out (W/D/H)(mm)	194 x 134	233 x 176
• Power Supply	18...32 Vdc	
• Power Consumption	- 8 W (24 Vdc)	- 10 W (24 Vdc)
• Operating Temperature (C°)	0 ... +50	
• Humidity	<90% (non condensing)	
• Weight (kg)	- 1,6	- 2

Codes	Descriptions
IT107W0101	7" Wide 65k COLORS SP1/ETH
IT107W0111	7" Wide 65k COLORS SP1/SP2/ETH
IT107W0121	7" Wide 65k COLORS SP1/CAN/ETH
IT107W0131	7" Wide 65k COLORS SP1/DP/ETH
IT107W0111B	7" Wide 65K COLORS SP1/SP2/ETH/BATTERY
IT107T0111	7,5" 65k COLORS SP1/SP2/ETH
IT107T0121	7,5" 65k COLORS SP1/CAN/ETH
IT107T0131	7,5" 65k COLORS SP1/DP/ETH
IT107T0151	7,5" 65k COLORS SP1/PROFINET/ETH
IT107T0511	7,5" 65k COLORS COM0/SP2/ETH

Vibration EN60068-2-6 Shock EN60068 Humidity EN60068-2-30



Programming Software FreeDownload



	IT110T	IT112T	IT115T
• Size	10,4" 65k Colors CCFL	12,1" 65k Colors White LED	15" 65k Colors White LED
• Resolution (pixel)	640x480	800x600	1024 x 768
• Flash		64 MB	
• Serial Ports	SP1 RS232/485/MPI ; SP2 RS232/485/MPI, CAN, Profibus-DP, ProfiNet		
• Network	2 x Ethernet 10/100 Mbit - RJ45		
• USB Ports	2 x v 1.1 Host + 1 x v 1.1 Device	2 x v 1.1 + 1 on the front Host 1 x v 1.1 Device	
• Slot	Secure Digital / MMC + Compact Flash		
• Audio	Mic IN - Line OUT (Only Pro Version)		
• External(W/D/H)(mm)	336,3 x 256 x 62,9	425 x 300x 66,8	
• Cut-out (W/D/H)(mm)	314 x 240	399 x 274	
• Power Supply		18...32 Vdc	
• Power Consumption	- 15 W (24 Vdc)		- 20 W (24 Vdc)
• Temperature (C°)	0 ... 50		
• Humidity	<90% (non condensing)		
• Weight (kg)	- 2,8 kg		- 6 kg

Codes	Descriptions
IT110T01120	10,4" 65k COLORS SP1/SP2/2ETH,CF
IT110T01220	10,4" 65k COLORS SP1/CAN/2ETH,CF
IT110T01320	10,4" 65k COLORS SP1/DP/2ETH,CF
IT110T01520	10,4" 65k COLORS SP1/PROFINET/2ETH,CF
IT110T1112	10,4" 65k COLORS SP1/SP2/2ETH/AUDIO,CF/PRO
IT110T1122	10,4" 65k COLORS SP1/CAN/2ETH/AUDIO,CF/PRO
IT110T1132	10,4" 65k COLORS SP1/DP/2ETH/AUDIO,CF/PRO

The professional version of IT110, IT112 and IT115 can display the content of Excel, Word and PDF files directly on the HMI and access the internet through Internet Explorer

Vibration EN60068-2-6; Shock EN60068; Humidity EN60068-2-30



IT107 & IT112 Stainless Steel

Programming Software FreeDownload



	IT107WX	IT112TX
• Size	7" Wide TFT 65k Colors White LED	12,1" TFT 65k Colors White LED
• Resolution (pixel)	800x480	800x600
• Flash	32 MB	64 MB
• Serial Ports	SP1 RS232/485/MPI ; SP2 RS232/485/MPI, CAN, Profibus-DP	
• Network	Ethernet 10/100 Mbit - RJ45	2 x Ethernet 10/100 Mbit - RJ45
• USB Ports	1 x v 1.1 Host + 1 x v 1.1 Device	2 x v 1.1 Host + 1 x v 1.1 Device
• Slot	Secure Digital / MMC	Secure Digital / MMC + Compact Flash
• Audio	-	Mic In + Line Out (Only Pro version)
• External (W/D/H)(mm)	228 x 155 x 44,3 (63,7 with double port)	336 x 256 x 67,6
• Cut-out (W/D/H)(mm)	219 x 146	320 x 240
• Power Supply		18...32 Vdc
• Power Consumption	- 8 W (24 Vdc)	- 15 W (24 Vdc)
• Temperature (C°)	0 ... +50	
• Humidity	<90% (non condensing)	
• Weight (kg)	- 1,6	- 4,8

INOX V2A (AISI 304) stainless steel particularly corrosion-resistant TRUE FLAT touch screen

Codes	Descriptions
IT107WX101	7"wide 65k COLORS/INX/SP1/ETH,SD
IT107WX111	7"wide 65k COLORS/INX/SP1/SP2/ETH,SD
IT107WX121	7"wide 65k COLORS/INX/SP1/CAN/ETH,SD
IT107WX131	7"wide 65k COLORS/INX/SP1/DP/ETH,SD
IT112TX1120	12,1" 65k COLORS/INX/SP1/SP2/2ETH,CF
IT112TX1220	12,1" 65k COLORS/INX/SP1/CAN/2ETH,CF
IT112TX1320	12,1" 65k COLORS/INX/SP1/DP/2ETH,CF
IT112TY112	12,1" 65k COLORS/PRO/INX/SP1/SP2/2ETH,AUDIO,CF
IT112TY122	12,1" 65k COLORS/PRO/INX/SP1/CAN/2ETH,AUDIO,CF

The professional version of IT112 can display the content of Excel, Word and PDF files directly on the HMI and access the internet through Internet Explorer

Vibration EN60068-2-6 Shock EN60068 Humidity EN60068-2-30 DIN EN1672-2

