

ACW-TH-O

Temperature/Humidity Sensor Outdoor

OUTDOOR • ALERT • SMART CITY/BUILDING

Networks



Sigfox™



LoRaWan®

Performances



Range: up to 15km

Autonomy



Periodic mode



Eco-energy mode: extended autonomy



Battery pack 7.2 Ah



Battery level indication

Diverse



Configuration by USB



SMS & Emails alerts



Web Platform



Waterproof housing
IP66



The ACW-TH-O is a radio sensor for measuring **ambient temperature** and **outdoor humidity**. The case is waterproof, so it can be subjected to bad weather. The transmission of data is done periodically.

Thanks to the "Eco-energy" mode, it is possible to reduce the number of emissions to **extend battery life by up to 3 times**, this reducing your operating costs and your impact on the environment.

In case of anomaly, an email or SMS will be instantly sent to one or more previously configured recipients.

This **temperature / humidity** sensor is available in different versions designed to work on the new **LPWAN** networks dedicated to the Internet of Things: Sigfox and LoRaWAN. Ideal for supervising your equipment on the Web, it is perfectly suited for the surveillance of buildings in the tertiary or industry or even agriculture.

A version with GPS integrated is also available (in LoRaWAN version).



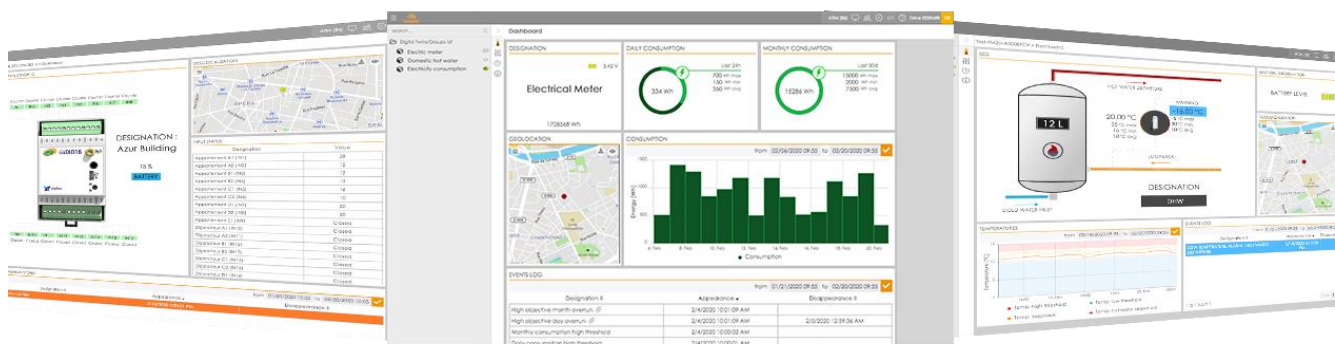
Technical features

Dimensions	100 x 100 x 35 mm	
Antenna	Integrated (¼ wave)	
Temperature	-20°C à +55°C (Operating mode) -40°C à +70°C (storage)	
Fixation	Mural	
Housing	Compact PVC IP66	
Power supply	Battery pack 7.2 Ah	
Weight	180 g	
Frequency	865 – 870 MHz	
Power	25 mW (14 dBm)	
Rate	Sigfox: 100 bit/s LoRaWAN: 300 bit/s à 10 Kbit/s	
Consumption	Sigfox	LoRaWAN
Tx Mode	60 mA	50 mA
Standby	7 µA	7 µA
Rx Mode	35 mA	18 mA

References

- ACW/SF8-TH-O
Sigfox version
- ACW/LW8-TH-O
LoRaWAN version

ATIM Cloud Wireless™ Platform (option)



Control all your ATIM devices using Sigfox and LoRa on the same secured Web platform!
Manage and operate your IoT data very easily.
Thanks to new LPWAN networks, device remote management is simple and accessible to anyone.

- Managing the products by groups
- Real time visualisation
- Signal quality
- Mobile app
- Emails & SMS alerts
- Secured API
- Export your data
- On-call management
- Products geolocation
- Personalization: white label
- Downlinks



ATIM Radiocommunications

Chemin des Guilletts
38250 Villard de Lans
France

www.atim.com
info@atim.com
+33 4 76 95 50 65

