

BRIDGE MODBUS RADIO MODEM RS232/RS485



Smart Industry



Utilities



500mW



25mW

Modbus Bridge mode

RS232 or RS485 connections

Radio range:
>22 kms with 500mW
>6 kms with 25mW

10-30 Vdc external power supply

Setup via USB or downlink

Features

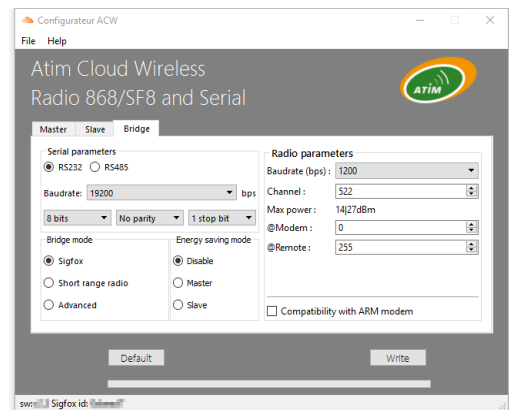
ACW-DINRS/RS+ transmits data from one Modbus device to another via radio.

Versions in 25mW or 500mW are available in function of the needed radio range.

The devices are connected to the PLCs via an RS232 or RS485 link (transparent mode).

Bridge mode: allows you to create a point-to-point or point-to-multipoint link by interconnecting devices equipped with an RS232 or RS485 interface.

The bridge mode setup is to be made on the ACW configurator.



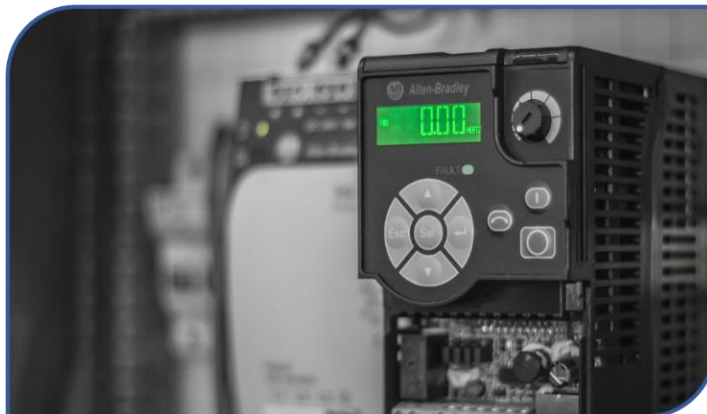
References

Part number	Technology
ACW/868-DINRS (25mW)	Local
ACW/868-DINRS+ (500mW)	Local

SERIAL LINK COMMUNICATION: USE CASES

COLLECT DATA FROM AN ISOLATED SENSOR

- Retrieve information from all types of analog sensors (pressure, temperature, level, etc.) equipped with an RS232 / RS485 port
- Regularly check the proper functioning of your equipment



- Interrogate your weather station and collect the data
- Identify and understand climate change
- Adapt the management of your crops (wind, rain, frost, etc.) according to the data received

PATTERN: SERIAL DATA TRANSMISSION

